



KASHIMA ARTS

September 2022

Dual Exhibition Opening:
Abe Anjin Exhibition: Thinking Bizen
and Calligraphy by Artists: Another Face

Dates: September 23 (Fri) to October 1 (Sat), 2022

Venue: Kashima Arts (3-3-2 Kyobashi, Chuo-ku, Tokyo)

Overall Exhibited Works Approx. 55 / Free Admission / Art Sales Exhibition



Kashima Arts is proud to announce the opening of two special exhibitions, "Calligraphy by Artists: Another Face" and "Abe Anjin Exhibition: Thinking Bizen," from September 23 (Fri). On view on October 1 (Sat), the exhibition will be displayed separately, across two floors of the gallery.

【On *Calligraphy by Artists: Another Face*】

In this exhibition, approx. 40 never-before exhibited works by Abe Anjin will be on exhibit.

The highly renowned Bizen-style potter, Abe Anjin's works are characterized by the artist's deep fascination for antiquity, forms exclusive to Bizen ware, and a distinct and charming color arrangement. Abe Anjin's works have received great acclaim worldwide and have been acquired by the likes of the Metropolitan Museum of Art, NY and the National Palace Museum, Taipei.

Abe Anjin (1938-)

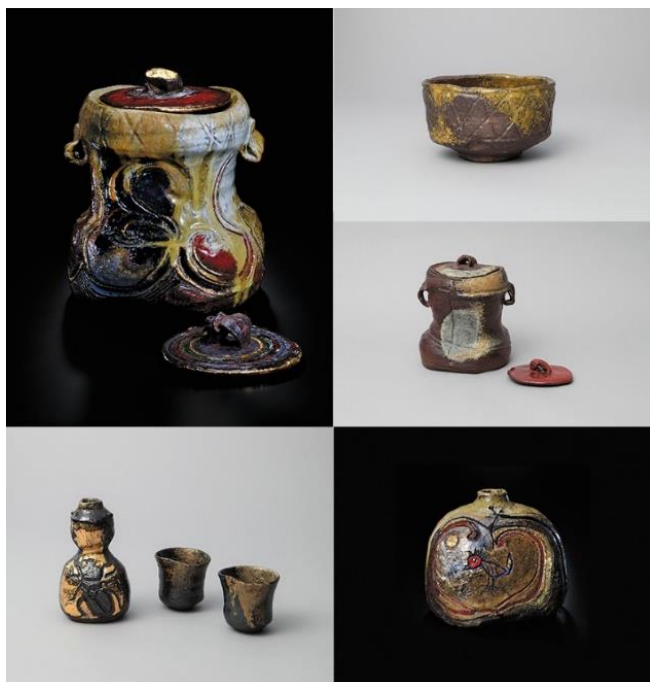
Born in Osaka in 1938, Abe Anjin studied under Miyamoto Saburo at the Contemporary Art Laboratory from the age of 21. In his 30s, he entered the field of ceramics and built a kiln in Ushimado-cho, Setouchi City, Okayama Prefecture.

In 1996, he held his first solo exhibition overseas in New York, "Abe Anjin Exhibition". Following this, he expanded his field of activity overseas, and held his solo exhibition, "ANJIN ABE" in France (Paris, 2002) and exhibited at the "Arts of Pacific Asia Show" (San Francisco, 2008) in the US.

In addition, Abe was involved in the planning the pottery department during the establishment Shimane IT Design College. Actively giving academic lectures both in and out of Japan, Abe's vast contributions goes beyond creative pursuits, as he continues to foster talents and spread the art of ceramics to future generations.



Exhibiting Works



Upper left: *Saishoku Bizen Mizusashi (Colored Bizen Water Jar)*

Bottom left: *Saishoku Ibe Hyo-Tokkuri "Kuwagata" (Colored Ibe Sake Carafe "Kuwagata" / Ibe Shuki (Ibe Sake Cups)*

Upper right: *Ibe Chawan (Ibe Tea Bowl)*

Middle right: *Bizen Mizusashi (Bizen Water Jar)*

Bottom right: *Saishoku Bizen Henko "Akai Tori" (Colored Bizen Vase "Red Bird")*

【On Calligraphy by Artists: Another Face】

This exhibition will present a selection of calligraphy by various artists, such as Suda Kokuta, Munakata Shiko, Teshigahara Sofu and more. Transcending the ‘written’ form, these works bear a unique style and character that allows viewers to imagine a sense of their time, as well as the love and passion these artists had for the art. Exhibiting a range of different styles, the exhibition seeks to shine light onto the fascinating world of calligraphy that reveal "another face" to these artists and their works.



Left: Suda Kokuta, *Calligraphy*

Middle: Munakata Shiko, *Calligraphy*

Right: Teshigahara Sofu, *Work*

Suda Kokuta (1906-1990)

Suda Kokuta was a Western-style painter from Saitama, who was active in the Showa period. Considered one of the most significant late 20th century abstract painters of the Japanese avant-garde, his works have been exhibited across the globe, in various contemporary art exhibitions. Upon meeting Hasegawa Saburo, the abstract painting vanguard, he entered the Kokugakai (Society for National Painting) and pursued abstract painting. His works are often characterized by vitality, coloured by power and lack of restraint. Renowned also for his calligraphy and pottery, Kokuta accompanied and provided illustrations for Shiba Ryotaro's travelogue, "Kaidou wo Yuku" (On the Highways). He later received a Kodansha Culture Award for these illustrations.

Munakata Shiko (1903-1975)

Munakata Shiko is considered one of the leading Hanga (wood-block printing) artists of Japan. In discovering Van Gogh's Sunflower paintings, he aspired to become an oil painter, but later pursued the path of hanga making. Influenced by the Mingei movement led by the likes of Yanagi Muneyoshi and Kawai Kanjiro, he established his own distinct style by infusing characters and images. He produced many masterpieces depicting religious themes, such as "Two Bodhisattvas and Ten Great Disciples of Sakyamuni" and was awarded the prestigious Bunkakun-sho (Order of Culture Award) Bunkakun-sho (Order of Culture Award) at the age of 67.



Teshigawara Sofu (1900-1979)

Teshigawara Sofu was a floral artist who founded one of the three major schools of Ikebana, the “Ikebana Sogetsu-ryu.” Although he learnt Ikebana from an early age and demonstrated outstanding talent, he also pursued an original and unconventional style and advocated his own independent school, Sogetsu-ryu. He was instrumental in raising Ikebana to a world-class standard, and was awarded the French Ordre des Arts et des Lettres in 1960, Ordre national de la Légion d’honneur in 1961, and the Awards for Art (Geijutsu Sensho) in 1962.

【Event Outline】

Exhibition Titles | *Abe Anjin Exhibition: Thinking Bizen / Calligraphy by Artists: Another Face*

Exhibition Website | https://www.kashima-arts.co.jp/en/exhibitions/abeanjin_calligraphy/

Dates | September 23 (Fri) to October 1 (Sat), 2022 *10am to 6pm, open everyday

Exhibiting Works | *Calligraphy by Artists: Another Face* Approx. 15
(Suda Kokuta, Teshigawara Sofu, Munakata Shiko and more)

Abe Anjin Exhibition: Thinking Bizen Approx. 40

* Works are available for purchase at both exhibitions

Venue | Kashima Arts

TEL | (+81) (0)3-3276-0700

Admission | Free

Address | 3-3-2 Kyobashi, Chuo-ku, Tokyo, 104-0031

2 min walk from Exit 3 of Kyobashi Station, Tokyo Metro Ginza Line

3 min walk from Exit 7 of Ginza Itchome Station, Tokyo Metro Yurakucho Line

5 min walk from Exit A4 of Takaracho Station, Toei Subway Asakusa Line

9 min walk from Yaesu Minami-guchi (Yaesu south exit) of JR Tokyo Station

※Depending on the state of COVID-19, dates and details are subject to change. Please stay updated by visiting the Kashima Arts website or social media pages for the latest information.

Press & Media Related Inquires

Kashima Arts PR & Media Department

Tel : (+81) (0)3-3276-0700

Email : intl@kashima-arts.co.jp

Website : <https://www.kashima-arts.co.jp/en>