

PRESS RELEASE

KASHIMA ARTS

美術品展示販売会



宴

- Vol. 2 -

2023 SPRING

UTAGAE

Japanese Art Sales Exhibition *Utage -Vol. 2-*

Opening April 22 at Kashima Arts

Dates: April 22 (Sat) to April 30 (Sun), 2023

Venue: Kashima Arts (3-3-2 Kyobashi, Chuo-ku, Tokyo, Japan 104-0031)

Exhibiting Works: Approx. 20 works

Free admission

Kashima Arts (Kyobashi, Tokyo) is proud to announce the launch of a Japanese Art Sales Exhibition, *Utage -Vol. 2-* from April 22 (Sat) to April 30 (Sun), 2023.

Utage began last year as a series of special exhibitions to be held every spring showcasing the best of Kashima Arts' selection.

In this second edition, Kashima Arts will present approximately 20 works by the finest major Japanese painters, such as Maruyama Okyo, Oda Shitsushitsu, Uemura Shoen, Yokoyama Taikan and Suzuki Kiitsu.

Please take this opportunity to enjoy this spring's *Utage* selection.

► On *Utage -Vol. 2-*

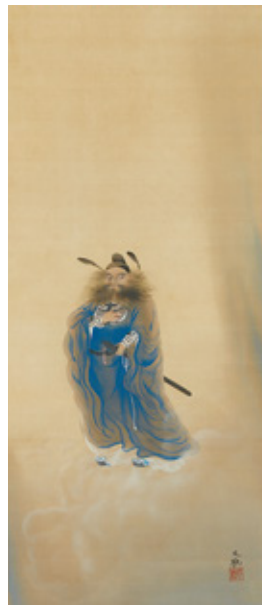
Since its inauguration, *Utage* has introduced, exhibited and offered the very best of Japanese art. From hanging scrolls to calligraphy and paintings, *Utage* brings together works carefully selected by the Japanese art specialist gallery, Kashima Arts. The Japanese term "utage" carries a wide range of meanings, from "celebration" and "enjoyment" to that of "peace" and "rest" (Source: Dai Kanwa jiten. Vol. III. By Morohashi Tetsuji. Tokyo: Tai Shukan Shoten). Subsequently, the concept for *Utage* flourished from the idea of enjoying art alongside the naturally colorful and vibrant season of spring.

The second volume of *Utage* will introduce the finest works by renowned masters from Edo to the Showa period. Among this lineup, two masterpieces to note are, bijin-ga icon and first female artist to receive the Order of Culture, Uemura Shoen's *Spring in Kuruwa (Red-light District)*, and Japanese painting leader of the Meiji, Taisho and Showa period, Yokoyama Taikan's *Zhong Kui*.

<Exhibiting Works>



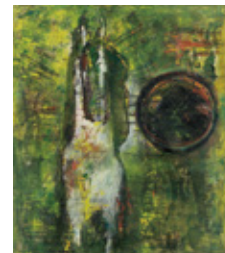
Mikuma Katen,
Frog and Cherry Blossoms



Yokoyama Taikan,
Zhong Kui



Yamaguchi Hoshun,
Iris



Yamaguchi Kaoru,
Marriage of the Moon and the Horse



Ono Chikkyo,
Lakeside in Spring



Kodama Kibou, *Eagle*
(Left side of a two-piece folding screen)

► Highlights

1.

Free Online Catalog

A highly accessible, free online catalog featuring images, captions and prices of exhibited works is available upon request.

For work inquiries, please contact Kashima Arts via e-mail, phone, fax or the gallery website.

[For catalog inquires]

Tel: (+81) 3-3276-0700 Fax: (+81) 3-3276-0701

Email: intl@kashima-arts.co.jp

Website:

<https://www.kashima-arts.co.jp/en/contact/>

Catalog requests →



Uemura Shoen,
Spring in Kuruwa (Red-light District)

2.

A Chance to View Art Without Glass Casing



Installation View



All works will be exhibited at the gallery without glass casing. An opportunity to view the subtle textures and details of each work, visitors are offered the chance to experience art at its fullest.

► About Kashima Arts

Founded in 1988, Kashima Arts offers and specializes in traditional Japanese art, from hanging scrolls, paintings and calligraphy, dating mainly from the Edo Period to the present day. In addition to the regular hosting of special exhibitions, Kashima Arts established the online-based auction platforms, "Japanese Art Auction MEGURU" and "MEGURU Online", with the hopes of making art more accessible and easier to incorporate into daily life. In addition to antique sales, Kashima Arts plays an active role as a supporter of Japanese art.

▶ Exhibition Details

Japanese Art Sales Exhibition, *Utage -Vol. 2-*

Exhibition Page

<https://www.kashima-arts.co.jp/en/exhibitions/utagevol2>



Dates & Times

April 22 (Sat) to 30 (Sun), 2023

※Open every day from 10 am to 6 pm / free admission / no reservations required

Exhibiting Works

Approx. 20 works

Exhibiting Artists

Maruyama Okyo, Oda Shitsushitsu, Uemura Shoen, Yokoyama Taikan, Ono Chikkyo, Yamaguchi Hoshun, Takehisa Yumeji, Suzuki Kiitsu, Yamashita Kiyoshi and more.

※Works available for sale

Location

Kashima Arts Co., Ltd.

3-3-2 Kyobashi, Chuo-ku, Tokyo 104-0031

Tel: 03-3276-0700

- Tokyo Metro Ginza Line “Kyobashi Station” 2-minute walk from Exit 3
- Tokyo Metro Yurakucho Line “Ginza Ichome Station” 3-minute walk from Exit 7
- Toei Asakusa Line “Takaracho Station” 5-minute walk from Exit A4
- JR Tokyo Station 9-minute walk from Yaesu South Exit



Exterior View

Media Inquiries

We will be accepting media requests during the period of the event. Please inquire below.

Kashima Arts Co., Ltd. Overseas Dept

Tel: +81(0)3-3276-0700

Email: intl@kashima-arts.co.jp

Web: <https://www.kashima-arts.co.jp/en/>