

March 2025

# Abe Anjin's Exhibition *Split Firewood* Starts on March 20 at Kashima Arts

## The colorful realm of the Bizen ware virtuoso

Dates: March 20 (Thu) to March 30 (Sun), 2025

Hours: 10am to 6pm (Open daily / Free admission / All works for sale)

Thu.20 - Sun.30 March

## Abe Anjin

Split Firewood

加島美術  
KASHIMA ARTS



Kashima Arts (Kyobashi, Tokyo) is proud to announce the opening of "Split Firewood," a solo exhibition by the Bizen ware virtuoso Abe Anjin, from Mar 20 (Thu) to Mar 30 (Sun), 2025. This will be Abe's third solo exhibition at Kashima Arts since 2022.

Abe Anjin was born in Osaka in 1938 and began his career as a painter in 1959, studying under the Western-style painter Miyamoto Saburo. He then switched to ceramics in 1972, and has continued to study ancient Bizen ware and explore a variety of techniques, establishing his own unique style of figurative expression, "Saishiki (Color glaze) Bizen". Abe's new expressions, born from his deep understanding of tradition and his unique aesthetic sense, have been highly praised both in Japan and abroad, and his works are included in the collections of many art museums, including the Metropolitan Museum of Art in the United States and the National Palace Museum in Taiwan.

This exhibition will feature 44 works, including Abe's ever-evolving "Saishiki (Color glaze) Bizen" wares with designs of Mt. Fuji, animals, insects, and letters, as well as Bizen wares with the flavor of Momoyama tea pottery, and last but not least oil paintings, the starting point of his artistic career. Please take a voyage into the world of Abe Anjin's oeuvre, where tradition and innovation blend together.

### [Artist's Comment]

*"Split Firewood"*

*My kiln firing begins with splitting wood.*

*Firewood can be any coniferous tree, whether it's pine, cedar, or cypress.*

*Firewood is procured in rough splits from a supplier. While rough splits can be used for kindling, to improve fuel efficiency, I split them into smaller pieces myself. However, other types of wood, except for pine, gradually become harder as they dry, making them impossible to split with a masakari (Japanese broadaxe).*

*There is a trick to splitting firewood. If you briefly glance at the right corner of the log with your left eye and then swing the masakari down without thinking about anything else, the masakari will hit the center. The moment you have a thought in your head, the masakari will miss.*

*I am confident that I have a success rate of over 95%.*

— Abe Anjin

## [Artist's Profile]

Born in Osaka in 1938, Abe Anjin studied under Miyamoto Saburo at the Contemporary Art Laboratory from the age of 21. In his 30s, he entered the field of ceramics and built a kiln in Ushimado-cho, Setouchi City, Okayama Prefecture. In 1996, he held his first international solo exhibition in New York, "Abe Anjin Exhibition". Following this, he expanded his field of activity overseas, and held his solo exhibition, "ANJIN ABE" in France (Paris, 2002) and exhibited at the "Arts of Pacific Asia Show" (San Francisco, 2008) in the US. In addition, Abe was involved in the planning the pottery department during the establishment Shimane IT Design College. Actively giving academic lectures both in and out of Japan, Abe's vast contributions goes beyond creative pursuits, as he continues to foster talents and spread the art of ceramics to future generations.



Member of the International Academy of Ceramics (IAC), recipient of the "Oribe Awards" from the Museum of Furuta Oribe

Artist's Website: <http://www.abe-anjin.com/>

## [Public Collections]

[ Japan ]

Ehime Prefectural Museum of Art, Itohara Memorial Museum, Kasama Nichido Museum of Art, Kano Museum of Art, The National Museum of Modern Art, Kyoto, Saijo Matsudaira Shrine Homotsukan, Shimane Prefecture Yokota Geijutsu no Mori, Dazaifu Tenmangu Museum, Nakajima Art Museum, Numazu Imperial Villa Memorial 100th Anniversary Park, The Museum of Ceramic Art, Hyogo, Miurart Village Art Museum, Midorigaoka Art Museum, The Museum of Furuta Oribe

[ Overseas ]

Ateliers d' de France (France), Museum of Decorative Arts and Design (Latvia) , National College of Art & Design (Ireland), Asian Art Museum (USA), New Mexico Museum of Art (USA), Mint Museum of Art (USA), Metropolitan Museum of Art (USA), Musée Ariana (Switzerland), Fitzwilliam Museum (UK), National Palace Museum (Taiwan), Yingge Ceramics Museum (Taiwan)

## [Exhibiting Works]



《Saishiki (Color glaze) Bizen Water Jar》  
20×22×19.5 cm



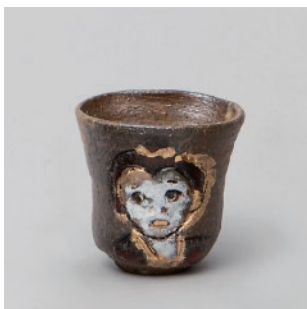
《Bizen Flower Vase》  
24×13.5×12.5 cm



《Saishiki (Color glaze) Bizen Tea Bowl》  
8.5×12×12 cm



《Bizen Tea Bowl with Calligraphy》  
8.5×13×13 cm



《Saishiki (Color glaze) Bizen Sake Cup》  
7×7×6 cm



《Bizen Sake Cup》  
6×6.5×6 cm

《Bizen Sake Carafe》  
12×8×8 cm



《Ken》  
Oil on canvas (size 50)



《Red Shadow Series 2025-2》  
Dry lacquer oil on canvas (size 15)



## [Split Firewood Catalog]

Featuring details and images of all lots, please take this opportunity to contact Kashima Arts for a free catalog.

To request for a catalog email: [intl@kashima-arts.co.jp](mailto:intl@kashima-arts.co.jp)

\*Please note that quantities are limited and the offer will end once stock runs out.

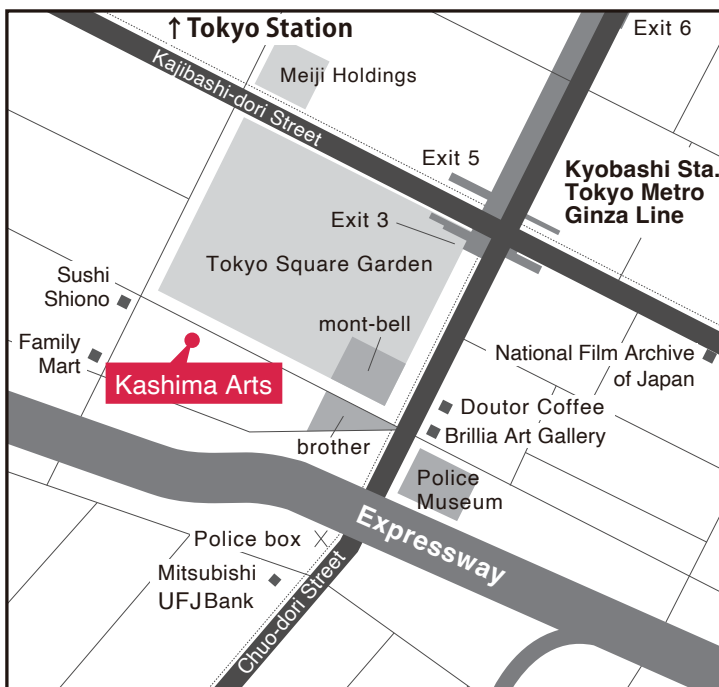
## [Event Outline]

Exhibition Title	Abe Anjin Exhibition "Split Firewood"
Exhibition Website	<a href="https://www.kashima-arts.co.jp/exhibitions/abeanjin_makiwowaru/">https://www.kashima-arts.co.jp/exhibitions/abeanjin_makiwowaru/</a>
Dates	March 20 (Sat) to March 30 (Sun), 2025 *10am to 6pm, open everyday
Exhibiting Works	Approx. 44 *All works for sale
Venue	Kashima Arts (3-3-2 Kyobashi, Chuo-ku, Tokyo) 2F
TEL	(+81) (0)3-3276-0700
Admission	Free

Website



## [Venue]



**Kashima Arts Co., Ltd.**  
3-3-2 Kyobashi, Chuo-ku, Tokyo

2 min walk from Exit 3 of Kyobashi Station, Tokyo Metro Ginza Line  
3 min walk from Exit 7 of Ginza-itcho Station, Tokyo Metro Yurakucho Line  
5 min walk from Exit A4 of Takaracho Station, Toei Subway Asakusa Line  
9 min walk from Yaesu Minami-guchi (Yaesu south exit) of JR Tokyo Station

### ▶ Press & Media Related Inquires

Kashima Arts PR & Media Department

Tel : (+81) (0)3-3276-0700

Email : [intl@kashima-arts.co.jp](mailto:intl@kashima-arts.co.jp)

Website : <https://www.kashima-arts.co.jp/en>